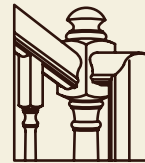


LEEPER'S

STAIR PRODUCTS
a division of *L.J. Smith Stair Systems*



L.J. Smith[®]
Stair Systems



(858) 614-1800

Product & Pricing Guide- Iron

Effective January 6, 2014

5/8" HOLLOW Round

Iron Balusters

Ornamental Iron Collection

L.J. Smith's Ornamental Iron line offers an extensive assortment of popular HOLLOW and SOLID styles. Our balusters are constructed from "mild" steel, making them very durable and much stronger than wrought iron versions. Each and every baluster is hand made, which means no two are exactly alike. The slight variations in the details add exceptional character to any stairway. The guide below can be used to quickly find the desired style and size.

HOLLOW BALUSTERS..... 15-22

- 5/8" Round..... 15
- 1/2" Square..... 16-17
- Kneewall 1/2" Square..... 18-20
- 9/16" Square..... 21
- Mega 3/4" Square..... 22

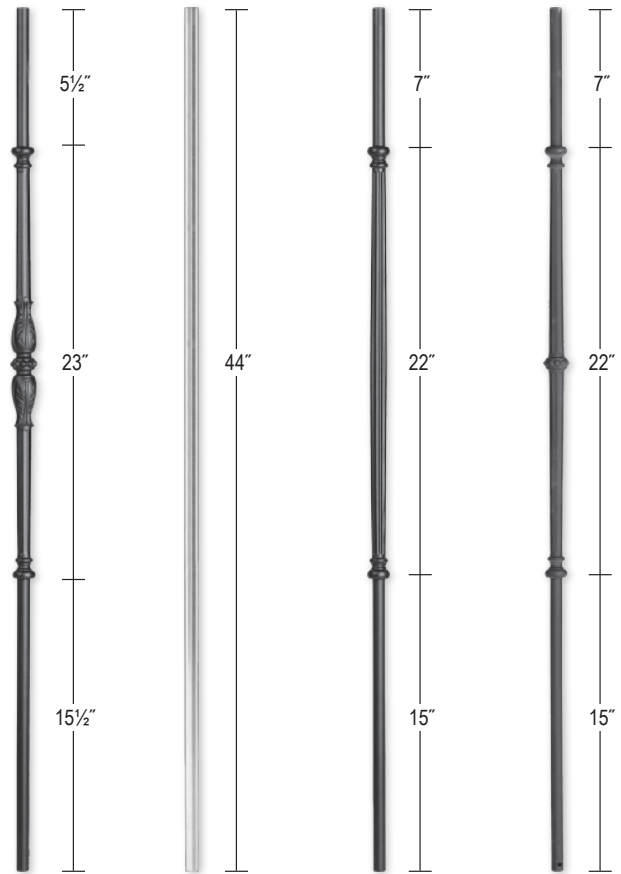
SOLID BALUSTERS..... 23-29

- 1/2" Round..... 23
- 1/2" Square..... 24-27
- 9/16" Square..... 28-29

IronPro™30

IRON NEWELS31

See back cover for finish colors



LIH-HOL65044 LIH-HOL65144 LIH-HOL65244 LIH-HOL65344

Part No.	Qty./ Box	Satin Black-SB	Matte Black-MB	Oil Rubbed Copper-ORC	Oil Rubbed Bronze-ORB
LIH-HOL65044	10	21.00	21.00	24.49	28.25
LIH-HOL65144	15	6.29	6.29	7.47	7.47
LIH-HOL65244	10	16.82	16.82	17.95	20.79
LIH-HOL65344	10	17.21	17.21	18.41	21.66
LI-R010	15	3.45	3.45	3.81	3.81

- Stock part numbers are shaded
 - See back cover for finish samples
- NOTE: Finishes may vary**

Shoe shown below is compatible with the 5/8" ROUND balusters above.

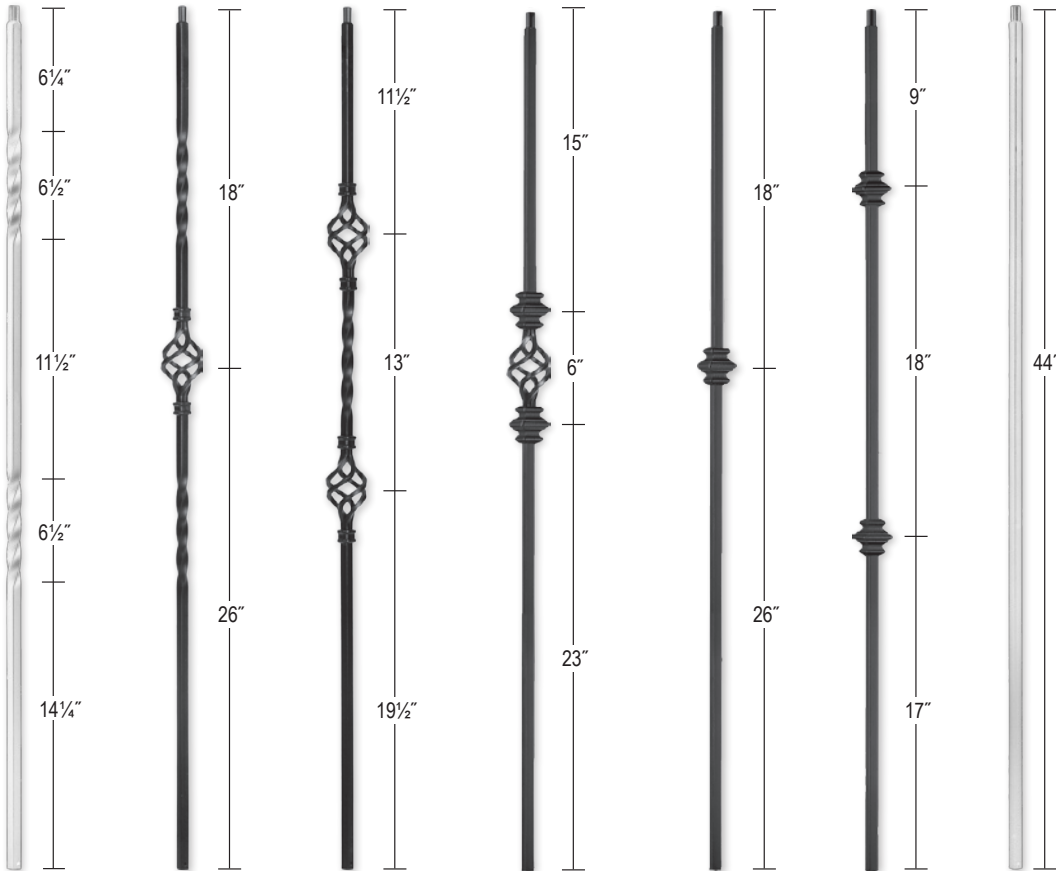


LI-R010
No Set Screw
Iron

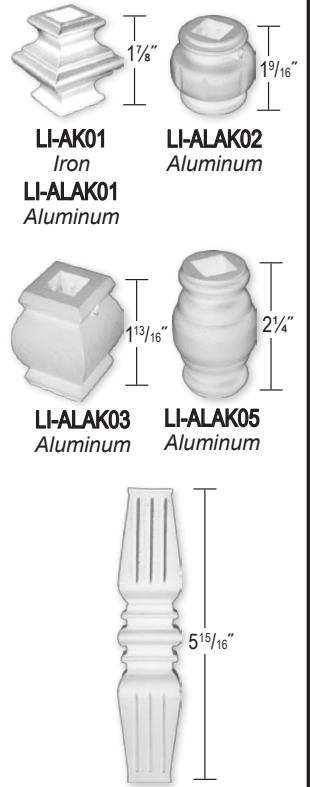


(858) 614-1800

1/2" HOLLOW Square



Adjustable Knuckles are used with LIH-HOLPLA44



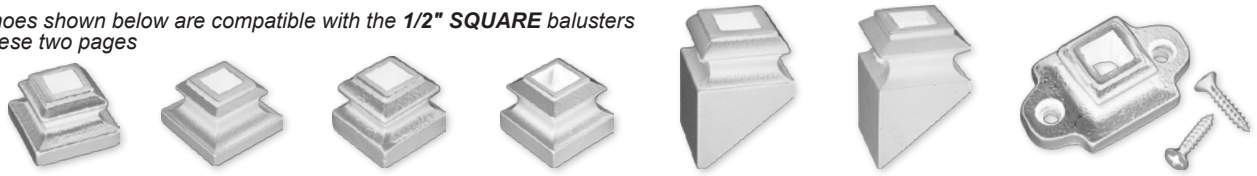
HOLDBLTW44* HOL1BASK44 HOL2BASK44 HOL2KNUC1BASK44 HOL1KNUC44 HOL2KNUC44 HOLPLA44

LI-ALAK04 Aluminum

* This baluster is designed to be used with HOL1BASK44. See page 17 for the standard Double Twist baluster.

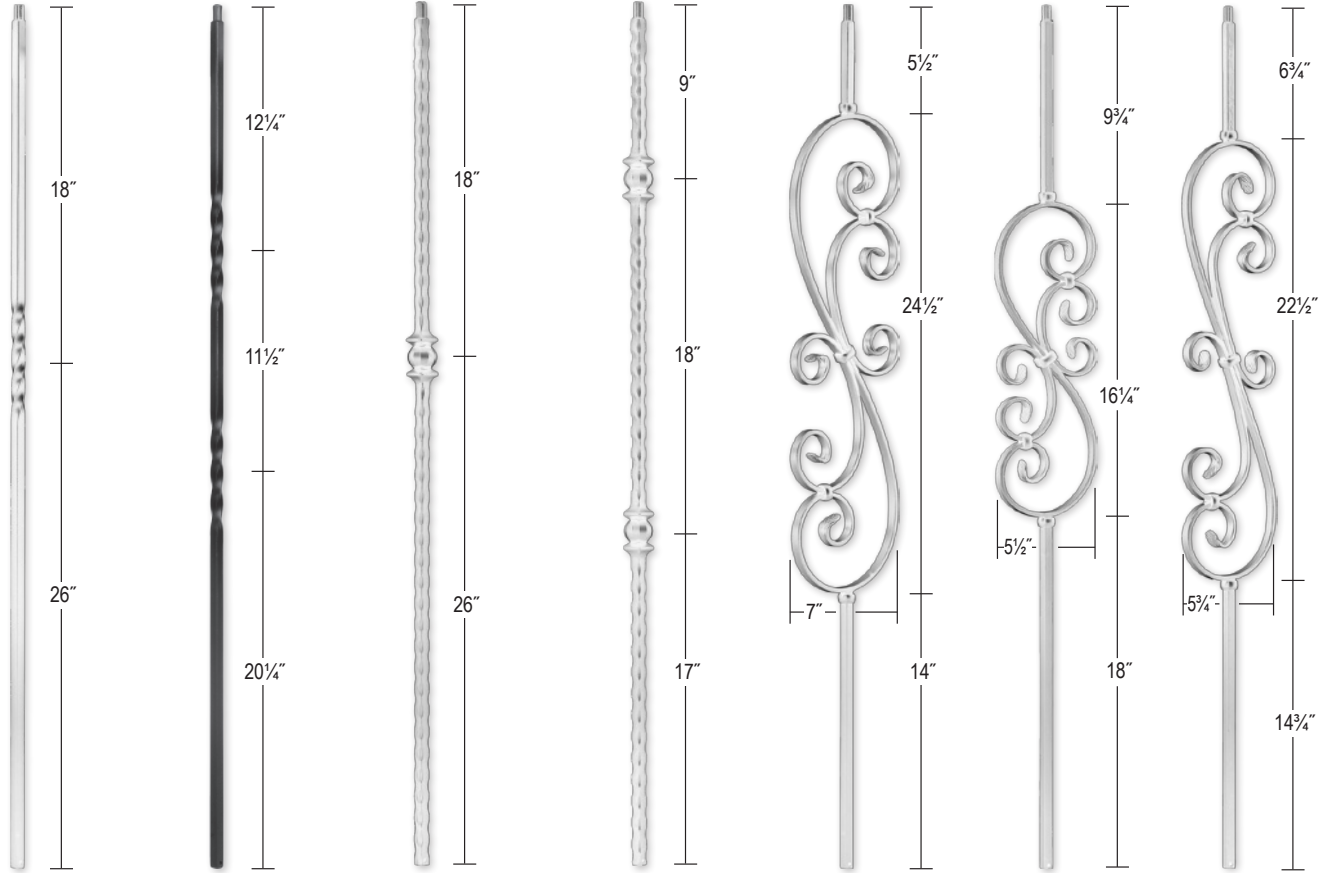
Part No.	Qty./ Box	Satin Black-SB	Matte Black-MB	Silver Vein-SV	Antique Bronze-ABZ	Oil Rubbed Copper-ORC	Oil Rubbed Bronze-ORB
LIH-HOLDBLTW44	20	5.94	N/A	N/A	N/A	N/A	N/A
LIH-HOL1BASK44	10	10.15	10.15	10.15	10.15	10.70	12.17
LIH-HOL2BASK44	10	11.52	11.52	11.52	11.52	13.24	14.24
LIH-HOL2KNUC1BASK44	10	12.41	N/A	N/A	N/A	N/A	N/A
LIH-HOL1KNUC44	10	8.91	8.91	8.91	8.91	9.39	10.21
LIH-HOL2KNUC44	10	10.70	10.70	10.70	10.70	11.72	12.55
LIH-HOLPLA44	20	5.32	5.32	5.32	5.32	5.70	5.95
LI-AK01	15	2.49	2.49	2.49	2.49	2.86	2.86
LI-ALAK01	15	2.49	2.49	2.49	2.49	2.86	2.86
LI-ALAK02	15	4.63	4.63	4.63	4.63	5.23	5.23
LI-ALAK03	15	4.63	4.63	4.63	4.63	5.23	5.23
LI-ALAK04	15	9.98	9.98	9.98	9.98	10.83	10.83
LI-ALAK05	15	4.52	4.52	4.52	4.52	5.11	5.11
LI-FSH01	15	2.14	2.14	2.14	2.14	2.49	2.49
LI-ALFSH01	15	1.64	1.64	1.64	1.64	1.88	1.88
LI-M06	15	2.02	2.02	2.02	2.02	2.35	2.35
LI-ALM06	15	1.64	1.64	1.64	1.64	1.88	1.88
LI-PSH02	15	2.49	2.49	2.49	2.49	2.74	2.74
LI-ALPSH02	15	1.89	1.89	1.89	1.89	2.14	2.14
LI-SCR04	15	2.49	2.49	2.49	2.49	2.81	2.81

All shoes shown below are compatible with the 1/2" SQUARE balusters on these two pages



LI-FSH01 No Set Screw Iron
 LI-ALFSH01 No Set Screw Aluminum
 LI-M06 With Set Screw Iron
 LI-ALM06 With Set Screw Aluminum
 LI-PSH02 With Set Screw Iron
 LI-ALPSH02 With Set Screw Aluminum
 LI-SCR04 Screw Down Iron

1/2" HOLLOW Square



LIH-HOL1TW44 LIH-HOL2TW44 LIH-HOL30544 *Hammered Edge* LIH-HOL30844 *Hammered Edge* LIH-HOL30144 LIH-HOL50144 LIH-HOL60144

Part No.	Qty./ Box	Satin Black-SB	Matte Black-MB	Silver Vein-SV	Antique Bronze-ABZ	Oil Rubbed Copper-ORC	Oil Rubbed Bronze-ORB
LIH-HOL1TW44	20	5.35	5.35	5.35	5.35	5.83	6.35
LIH-HOL2TW44	20	5.94	5.94	5.94	5.94	6.55	7.00
LIH-HOL30544	10	9.90	9.90	9.90	9.90	12.43	14.91
LIH-HOL30844	10	13.98	13.98	13.98	13.98	16.95	19.00
LIH-HOL30144	5	21.95	22.35	Call us	Call us	23.19	24.95
LIH-HOL50144	5	20.20	20.20	Call us	Call us	20.95	21.95
LIH-HOL60144	5	21.26	21.26	21.26	21.26	22.12	23.45
LI-ALSCR05	15	1.89	1.89	1.89	1.89	2.14	2.14
LI-M020	15	2.49	2.49	Call us	Call us	Call us	Call us
LI-M022	15	2.49	2.49	Call us	Call us	Call us	Call us
LI-ALRD201	15	2.27	2.27	2.27	2.27	2.49	2.49
LI-ALSQ301	15	2.27	2.27	2.27	2.27	2.49	2.49
LI-PROCOL	15	2.49	2.49	2.49	2.49	2.74	2.74
LI-PROLVL	12	6.98	N/A	N/A	N/A	N/A	N/A
LI-PROKNE	12	8.09	N/A	N/A	N/A	N/A	N/A

• Stock part numbers are shaded NOTE: Finishes may vary

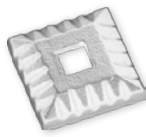
All shoes shown below are compatible with the 1/2" SQUARE balusters on these two pages
 LI-ALRD201 & LI-ALSQ301 have a plastic insert and are compatible with 1/2" & 9/16" Square iron balusters.



LI-ALSCR05
Screw Down
Aluminum



LI-M020
No Set Screw
Iron



LI-M022
No Set Screw
Iron



LI-ALRD201
No Set Screw
Aluminum



LI-ALSQ301
No Set Screw
Aluminum



LI-PROCOL
With Threaded Disc
Aluminum



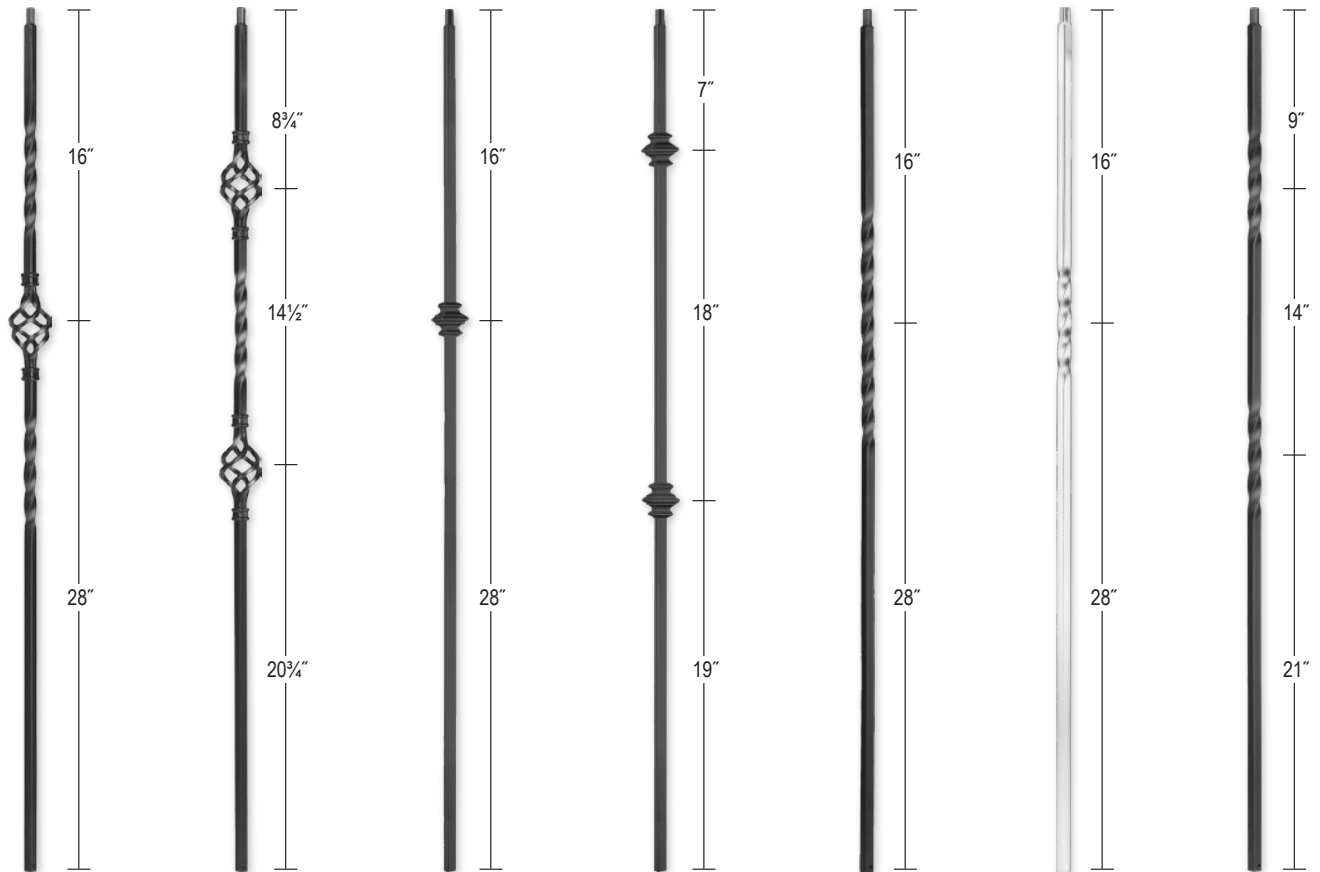
LI-PROLVL
Alum/Iron
(See page 30 for details on IronPro)



LI-PROKNE
Alum/Iron

Kneewall 1/2" HOLLOW Square

The balusters shown on these two pages are specially designed for Kneewall stairs. The measurement from the top of the baluster to the middle of the center detail is 16" for each style.



LIH-KW1BASK44 LIH-KW2BASK44 LIH-KW1KNUC44 LIH-KW2KNUC44 LIH-KW1TW44 LIH-KW1TWS44 LIH-KW2TW44

Part No.	Qty./ Box	Satin Black-SB	Matte Black-MB	Silver Vein-SV	Antique Bronze-ABZ	Oil Rubbed Copper-ORC	Oil Rubbed Bronze-ORB
LIH-KW1BASK44	10	10.15	10.15	10.15	10.15	10.70	12.17
LIH-KW2BASK44	10	11.52	11.52	11.52	11.52	13.24	14.24
LIH-KW1KNUC44	10	8.91	8.91	8.91	8.91	9.39	10.21
LIH-KW2KNUC44	10	10.70	10.70	10.70	10.70	11.72	12.55
LIH-KW1TW44	20	5.35	5.35	5.35	5.35	5.83	6.35
LIH-KW1TWS44	20	5.35	5.35	5.35	5.35	5.83	6.35
LIH-KW2TW44	20	5.94	5.94	5.94	5.94	6.55	7.00
LI-PSH02	15	2.49	2.49	2.49	2.49	2.74	2.74
LI-ALPSH02	15	1.89	1.89	1.89	1.89	2.14	2.14
LI-PROKNE	12	8.09	N/A	N/A	N/A	N/A	N/A

• Stock part numbers are shaded —NOTE: Finishes may vary

All shoes shown below are compatible with the 1/2" SQUARE balusters on this page.



LI-PSH02
With Set Screw
Iron



LI-ALPSH02
With Set Screw
Aluminum



LI-PROKNE
Alum/Iron

(See page 30 for details on IronPro)



(858) 614-1800

Kneewall 1/2" HOLLOW Square

The balusters shown on these two pages are specially designed for Kneewall stairs. The measurement from the top of the baluster to the middle of the center detail is 16" for each style.



LIH-KW8044 LIH-KW8544 LIH-KW1RIB44 LIH-KW2RIB44 LIH-KW19044 LIH-KW20044 LIH-KW50144 LIH-KW60144

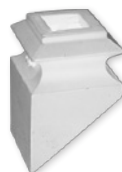
Part No.	Qty./Box	Satin Black-SB	Matte Black-MB	Silver Vein-SV	Antique Bronze-ABZ	Oil Rubbed Copper-ORC	Oil Rubbed Bronze-ORB
LIH-KW8044	10	10.34	10.34	10.34	10.34	12.40	13.99
LIH-KW8544	10	13.23	13.23	13.23	13.23	13.73	15.09
LIH-KW1RIB44	15	8.56	8.56	8.56	8.56	9.35	10.20
LIH-KW2RIB44	15	10.35	10.35	10.35	10.35	10.85	11.85
LIH-KW19044	10	12.75	12.75	12.75	12.75	16.25	17.50
LIH-KW20044	12	14.50	14.50	14.50	14.50	16.95	19.75
LIH-KW50144	5	20.20	20.20	20.20	20.20	20.95	21.95
LIH-KW60144	5	20.81	20.81	20.81	20.81	21.28	22.56
LI-PSH02	15	2.49	2.49	2.49	2.49	2.74	2.74
LI-ALPSH02	15	1.89	1.89	1.89	1.89	2.14	2.14
LI-PROKNE	12	8.09	N/A	N/A	N/A	N/A	N/A

• Stock part numbers are shaded —NOTE: Finishes may vary

All shoes shown below are compatible with the 1/2" SQUARE balusters on this page.



LI-PSH02
With Set Screw
Iron



LI-ALPSH02
With Set Screw
Aluminum



LI-PROKNE
Alum/Iron

(See page 30 for details on IronPro)

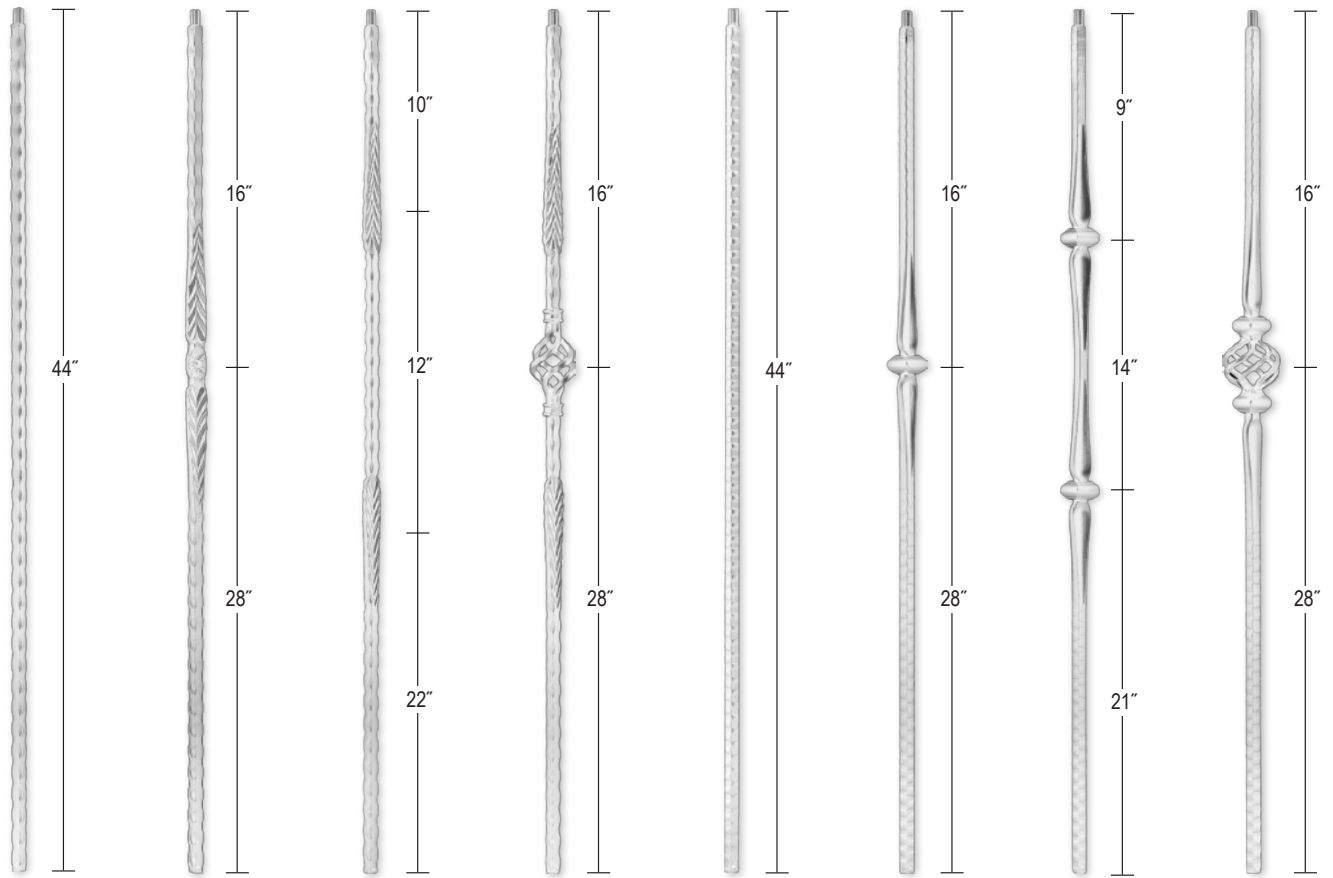


(858) 614-1800

Iron Balusters

Kneewall 1/2" HOLLOW Square

The balusters shown on this page are specially designed for Kneewall stairs. The measurement from the top of the baluster to the middle of the center detail is 16" for each style.



LIH-KW9044 Hammered Edge LIH-KW10044 Hammered Edge LIH-KW11044 Hammered Edge LIH-KW13044 Hammered Edge LIH-KW14344 Hammered Face LIH-KW14044 Hammered Face LIH-KW15044 Hammered Face LIH-KW16044 Hammered Face

Part No.	Qty./Box	Satin Black-SB	Matte Black-MB	Silver Vein-SV	Antique Bronze-ABZ	Oil Rubbed Copper-ORC	Oil Rubbed Bronze-ORB
LIH-KW9044	15	7.47	7.47	7.47	7.47	7.97	8.45
LIH-KW10044	10	9.63	9.63	Call us	Call us	10.13	11.13
LIH-KW11044	10	10.25	10.25	Call us	Call us	10.75	11.35
LIH-KW13044	10	12.73	12.73	Call us	Call us	19.25	20.15
LIH-KW14344	15	7.47	7.47	7.47	7.47	8.09	9.04
LIH-KW14044	10	10.49	10.49	10.49	10.49	13.22	14.75
LIH-KW15044	10	12.20	12.20	12.20	12.20	16.25	17.75
LIH-KW16044	10	15.75	15.75	15.75	15.75	18.75	21.50
LI-PSH02	15	2.49	2.49	2.49	2.49	2.74	2.74
LI-ALPSH02	15	1.89	1.89	1.89	1.89	2.14	2.14
LI-PROKNE	12	8.09	N/A	N/A	N/A	N/A	N/A

• Stock part numbers are shaded —NOTE: Finishes may vary

All shoes shown below are compatible with the 1/2" SQUARE balusters on this page.



LI-PSH02
With Set Screw
Iron



LI-ALPSH02
With Set Screw
Aluminum

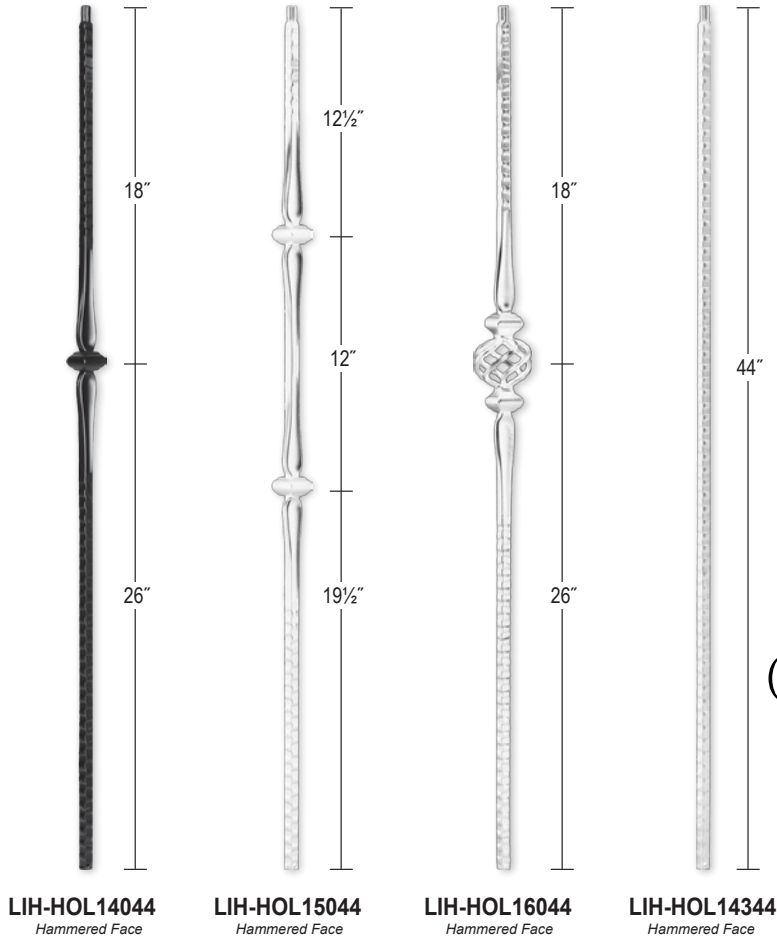


LI-PROKNE
Alum/Iron
(See page 30 for details on IronPro)



(858) 614-1800

9/16" HOLLOW Square

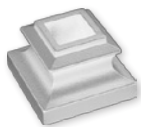


(858) 614-1800

Part No.	Qty./ Box	Satin Black-SB	Matte Black-MB	Silver Vein-SV	Antique Bronze-ABZ	Oil Rubbed Copper-ORC	Oil Rubbed Bronze-ORB
LIH-HOL14044	10	10.49	10.49	10.49	10.49	13.22	14.75
LIH-HOL14344	15	7.47	7.47	7.47	7.47	8.09	9.04
LIH-HOL15044	10	12.20	12.20	12.20	12.20	16.25	17.75
LIH-HOL16044	10	15.75	15.75	15.75	15.75	18.75	21.50
LI-H03	15	2.02	2.02	2.02	2.02	2.27	2.27
LI-H04	15	2.02	2.02	2.02	2.02	2.27	2.27
LI-H05P	15	2.02	2.02	2.02	2.02	2.27	2.27
LI-ALH05P	15	2.14	2.14	2.14	2.14	2.49	2.49
LI-H06	15	1.66	1.66	1.66	1.66	1.89	1.89
LI-ALH06	15	2.14	2.14	2.14	2.14	2.49	2.49
LI-ALRD201	15	2.27	2.27	2.27	2.27	2.49	2.49
LI-ALSQ301	15	2.27	2.27	2.27	2.27	2.49	2.49

• Stock part numbers are shaded —NOTE: Finishes may vary

Shoes shown below are compatible with the 9/16" SQUARE balusters shown on this page. LI-ALRD201 & LI-ALSQ301 have a plastic insert and are compatible with 1/2" & 9/16" Square iron balusters.



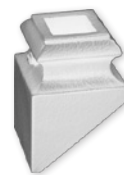
LI-H03
No Set Screw
Iron



LI-H04
Screw Down
Iron



LI-H05P
With Set Screw
Iron



LI-ALH05P
With Set Screw
Aluminum



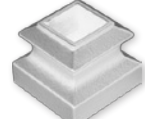
LI-ALRD201
No Set Screw
Aluminum



LI-ALSQ301
No Set Screw
Aluminum

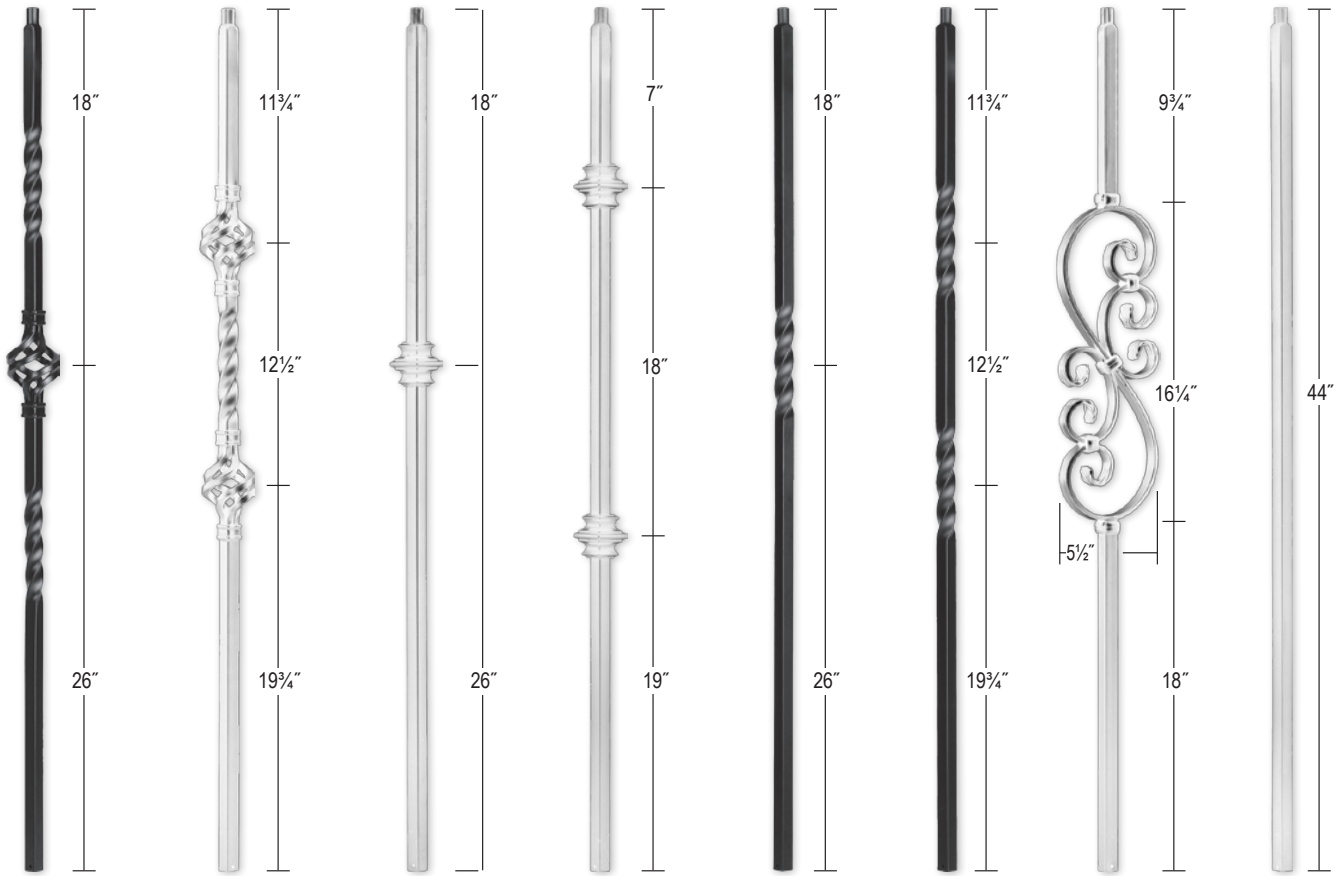


LI-H06
With Set Screw
Iron



LI-ALH06
With Set Screw
Aluminum

MEGA 3/4" HOLLOW Square



LIH-MG1BASK44 LIH-MG2BASK44 LIH-MG1KNUC44 LIH-MG2KNUC44 LIH-MG1TW44 LIH-MG2TW44 LIH-MG50144 LIH-MGPLA44

Part No.	Qty./ Box	Satin Black-SB	Matte Black-MB	Antique Bronze-ABZ	Oil Rubbed Copper-ORC
LIH-MG1BASK44	10	11.72	11.72	11.72	13.47
LIH-MG2BASK44	10	16.69	16.69	16.69	19.20
LIH-MG1KNUC44	10	11.98	11.98	11.98	13.78
LIH-MG2KNUC44	10	13.75	13.75	13.75	15.81
LIH-MG1TW44	10	7.80	7.80	7.80	8.97
LIH-MG2TW44	10	8.32	8.32	8.32	9.58
LIH-MG50144	4	26.46	26.46	26.46	30.43
LIH-MGPLA44	10	6.79	6.79	6.79	7.81
LI-ALMGFSH08	15	2.74	2.74	2.74	3.06
LI-ALMGM08	15	2.74	2.74	2.74	3.06
LI-ALMGPSH08	15	2.99	2.99	2.99	3.54

- Stock part numbers are shaded
- –NOTE: Finishes may vary

Shoes shown below are compatible with the 3/4" SQUARE balusters shown on this page.



LI-ALMGFSH08
No Set Screw
Aluminum



LI-ALMGM08
With Set Screw
Aluminum



LI-ALMGPSH08
With Set Screw
Aluminum

1/2" SOLID Round



LI-60044



LI-61144



LI-61244



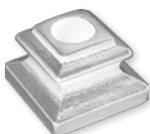
(858) 614-1800

Iron Balusters

Part No.	Qty./ Box	Satin Black-SB	Matte Black-MB	Oil Rubbed Copper-ORC	Oil Rubbed Bronze-ORB
LI-60044	10	11.97	11.97	14.12	15.18
LI-61144	10	13.50	13.50	15.79	16.37
LI-61244	10	17.30	17.30	20.26	22.25
LI-R08F	15	2.62	2.62	2.99	2.99
LI-R09P	15	2.86	2.86	3.09	3.09

• Stock part numbers are shaded —NOTE: Finishes may vary

Shoes shown below are compatible with the 1/2" ROUND balusters on this page

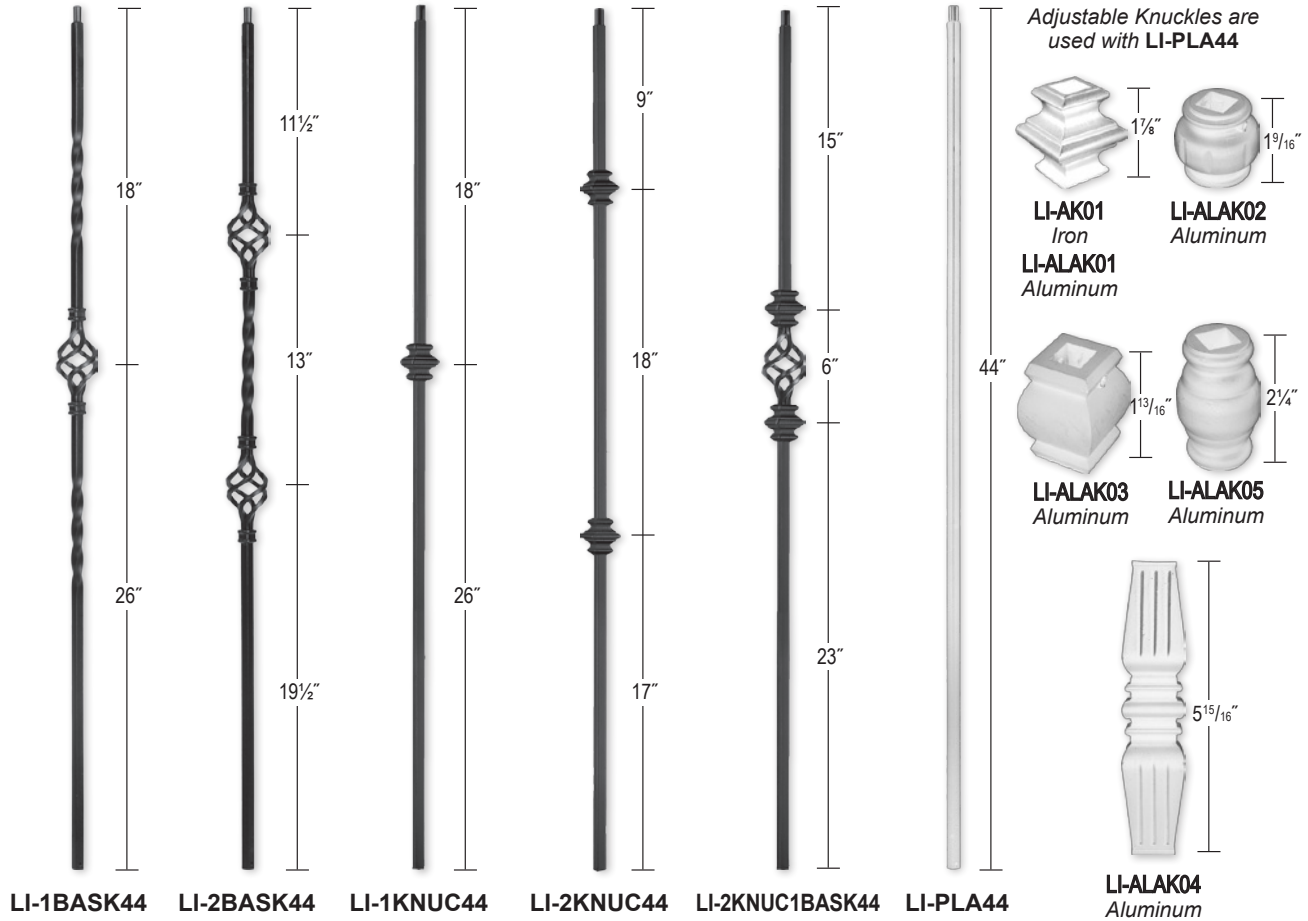


LI-R08F
No Set Screw
Iron



LI-R09P
With Set Screw
Iron

1/2" SOLID Square



Part No.	Qty./ Box	Satin Black-SB	Matte Black-MB	Silver Vein-SV	Antique Bronze-ABZ	Oil Rubbed Copper-ORC	Oil Rubbed Bronze-ORB
LI-1BASK44	10	10.35	10.35	10.35	10.35	11.32	13.05
LI-2BASK44	10	12.93	12.93	12.93	12.93	14.75	16.05
LI-1KNUC44	10	10.29	10.29	10.29	10.29	12.75	14.25
LI-2KNUC44	10	12.58	12.58	12.58	12.58	14.75	16.95
LI-2KNUC1BASK44	10	15.25	15.25	Call us	Call us	Call us	Call us
LI-PLA44	10	6.75	6.75	6.75	6.75	7.75	8.95
LI-AK01	15	2.49	2.49	2.49	2.49	2.86	2.86
LI-ALAK01	15	2.49	2.49	2.49	2.49	2.86	2.86
LI-ALAK02	15	4.63	4.63	4.63	4.63	5.23	5.23
LI-ALAK03	15	4.63	4.63	4.63	4.63	5.23	5.23
LI-ALAK04	15	9.98	9.98	9.98	9.98	10.83	10.83
LI-ALAK05	15	4.52	4.52	4.52	4.52	5.11	5.11
LI-FSH01	15	2.14	2.14	2.14	2.14	2.49	2.49
LI-ALFSH01	15	1.64	1.64	1.64	1.64	1.88	1.88
LI-M06	15	2.02	2.02	2.02	2.02	2.35	2.35
LI-ALM06	15	1.64	1.64	1.64	1.64	1.88	1.88
LI-PSH02	15	2.49	2.49	2.49	2.49	2.74	2.74
LI-ALPSH02	15	1.89	1.89	1.89	1.89	2.14	2.14
LI-SCR04	15	2.49	2.49	2.49	2.49	2.81	2.81

• Stock part numbers are shaded —NOTE: Finishes may vary All shoes shown below are compatible with the 1/2" SQUARE balusters on these two pages



LI-FSH01
No Set Screw
Iron



LI-ALFSH01
No Set Screw
Aluminum



LI-M06
With Set Screw
Iron



LI-ALM06
With Set Screw
Aluminum



LI-PSH02
With Set Screw
Iron



LI-ALPSH02
With Set Screw
Aluminum



LI-SCR04
Screw Down
Iron

1/2" SOLID Square



LI-1RIB44



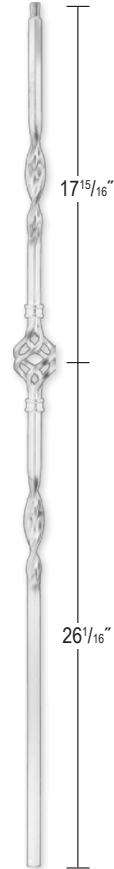
LI-2RIB44



LI-19044



LI-20044



LI-8044



LI-8544

Part No.	Qty./ Box	Satin Black-SB	Matte Black-MB	Silver Vein-SV	Antique Bronze-ABZ	Oil Rubbed Copper-ORC	Oil Rubbed Bronze-ORB
LI-1RIB44	15	10.07	10.07	Call us	Call us	11.25	Call us
LI-2RIB44	15	12.18	12.18	Call us	Call us	14.50	Call us
LI-19044	10	15.00	15.00	Call us	Call us	18.05	Call us
LI-20044	12	15.73	15.73	Call us	Call us	20.87	Call us
LI-8044	10	12.18	12.18	Call us	Call us	14.50	Call us
LI-8544	10	15.57	15.57	Call us	Call us	18.91	Call us
LI-ALSCR05	15	1.89	1.89	1.89	1.89	2.14	2.14
LI-M020	15	2.49	2.49	Call us	Call us	Call us	Call us
LI-M022	15	2.49	2.49	Call us	Call us	Call us	Call us
LI-ALRD201	15	2.27	2.27	2.27	2.27	2.49	2.49
LI-ALSQ301	15	2.27	2.27	2.27	2.27	2.49	2.49
LI-PROCOL	15	2.49	2.49	2.49	2.49	2.74	2.74
LI-PROLVL	12	6.98	N/A	N/A	N/A	N/A	N/A
LI-PROKNE	12	8.09	N/A	N/A	N/A	N/A	N/A

• Stock part numbers are shaded —NOTE: Finishes may vary

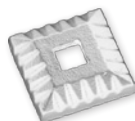
All shoes shown below are compatible with the 1/2" SQUARE balusters on these two pages
 LI-ALRD201 & LI-ALSQ301 have a plastic insert and are compatible with 1/2" & 9/16" Square
 iron balusters.



LI-ALSCR05
Screw Down
Aluminum



LI-M020
No Set Screw
Iron



LI-M022
No Set Screw
Iron



LI-ALRD201
No Set Screw
Aluminum



LI-ALSQ301
No Set Screw
Aluminum



LI-PROCOL
With Threaded Disc
Aluminum



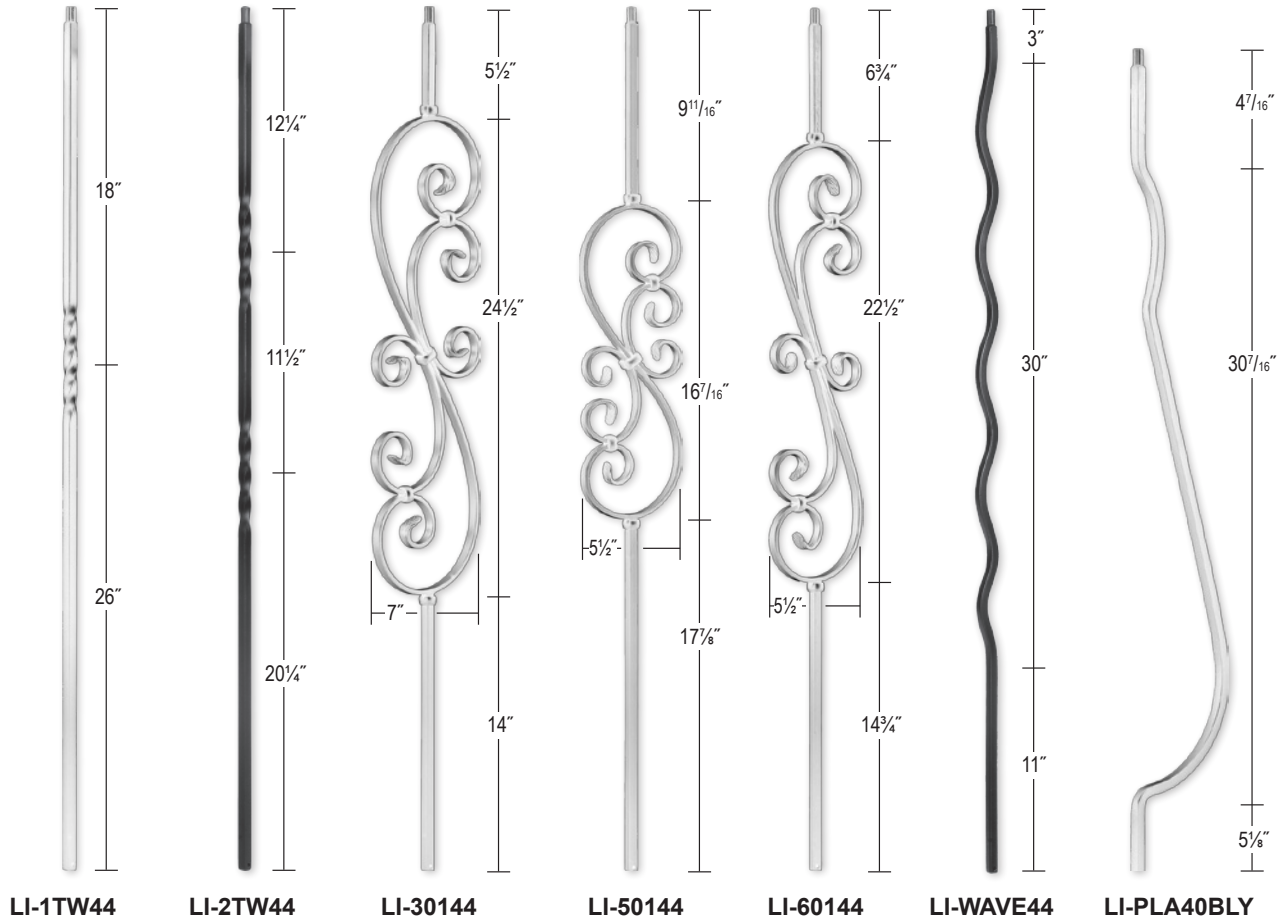
LI-PROLVL
Alum/Iron



LI-PROKNE
Alum/Iron

(See page 30 for details on IronPro)

1/2" SOLID Square



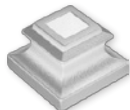
Part No.	Qty./ Box	Satin Black-SB	Matte Black-MB	Silver Vein-SV	Antique Bronze-ABZ	Oil Rubbed Copper-ORC	Oil Rubbed Bronze-ORB
LI-1TW44	10	8.17	8.17	8.17	8.17	9.75	10.85
LI-2TW44	10	8.50	8.50	8.50	8.50	9.50	10.75
LI-30144	5	22.35	22.35	22.35	22.35	23.71	25.95
LI-50144	5	18.12	18.12	18.12	18.12	21.28	23.62
LI-60144	5	22.98	22.98	22.98	22.98	25.11	26.62
LI-WAVE44	15	10.83	10.83	Call us	Call us	Call us	Call us
LI-PLA40BLY	10	9.93	9.93	Call us	Call us	Call us	Call us
LI-FSH01	15	2.14	2.14	2.14	2.14	2.49	2.49
LI-ALFSH01	15	1.64	1.64	1.64	1.64	1.88	1.88
LI-M06	15	2.02	2.02	2.02	2.02	2.35	2.35
LI-ALM06	15	1.64	1.64	1.64	1.64	1.88	1.88
LI-PSH02	15	2.49	2.49	2.49	2.49	2.74	2.74
LI-ALPSH02	15	1.89	1.89	1.89	1.89	2.14	2.14
LI-SCR04	15	2.49	2.49	2.49	2.49	2.81	2.81

• Stock part numbers are shaded —NOTE: Finishes may vary

All shoes shown below are compatible with the 1/2" SQUARE balusters on these two pages



LI-FSH01
No Set Screw
Iron



LI-ALFSH01
No Set Screw
Aluminum



LI-M06
With Set Screw
Iron



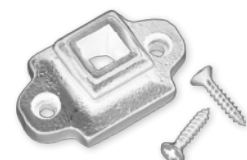
LI-ALM06
With Set Screw
Aluminum



LI-PSH02
With Set Screw
Iron

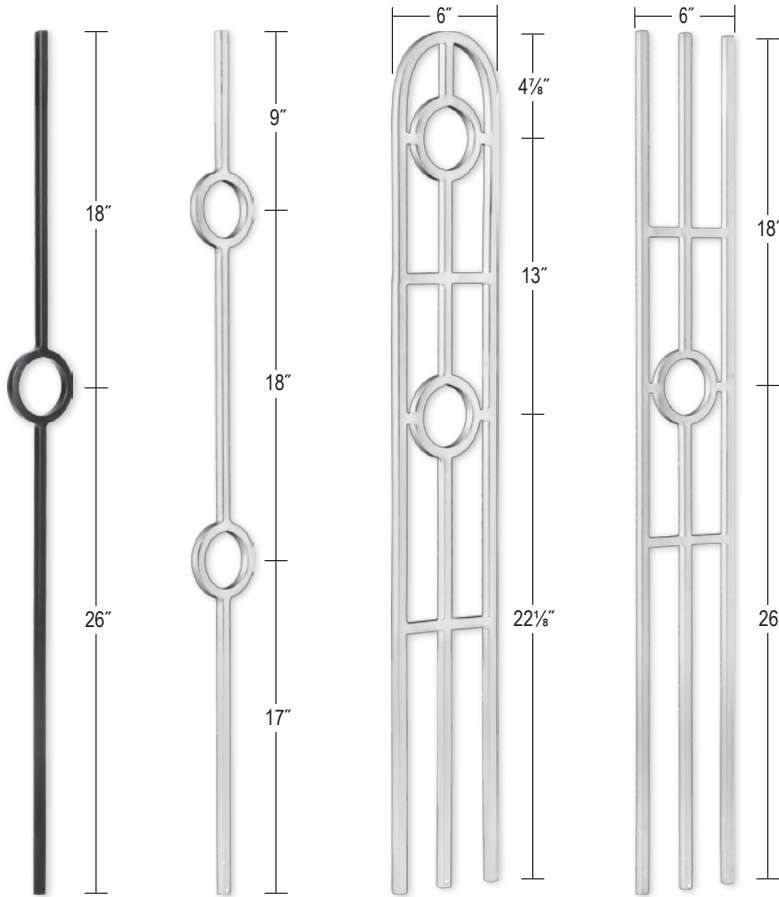


LI-ALPSH02
With Set Screw
Aluminum



LI-SCR04
Screw Down
Iron

1/2" SOLID Square



LI-40144

LI-40244

LI-40840

LI-41144



LI-ME03



LI-ME05



LI-ME07

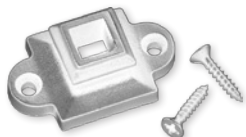


LI-ME08

Part No.	Qty./Box	Satin Black-SB	Matte Black-MB	Silver Vein-SV	Antique Bronze-ABZ	Oil Rubbed Copper-ORC	Oil Rubbed Bronze-ORB
LI-40144	10	23.23	Call us	Call us	Call us	Call us	Call us
LI-40244	10	25.72	Call us	Call us	Call us	Call us	Call us
LI-40840	5	39.45	Call us	Call us	Call us	Call us	Call us
LI-41144	5	37.10	Call us	Call us	Call us	Call us	Call us
LI-ME03	12	12.57	Call us	Call us	Call us	Call us	Call us
LI-ME05	12	12.57	Call us	Call us	Call us	Call us	Call us
LI-ME07	12	12.57	Call us	Call us	Call us	Call us	Call us
LI-ME08	12	12.57	Call us	Call us	Call us	Call us	Call us
LI-ALSCR05	15	1.89	1.89	1.89	1.89	2.14	2.14
LI-M020	15	2.49	2.49	Call us	Call us	Call us	Call us
LI-M022	15	2.49	2.49	Call us	Call us	Call us	Call us
LI-ALRD201	15	2.27	2.27	2.27	2.27	2.49	2.49
LI-ALSQ301	15	2.27	2.27	2.27	2.27	2.49	2.49
LI-PROCOL	15	2.49	2.49	2.49	2.49	2.74	2.74
LI-PROLVL	12	6.98	N/A	N/A	N/A	N/A	N/A
LI-PROKNE	12	8.09	N/A	N/A	N/A	N/A	N/A

• Stock part numbers are shaded —NOTE: Finishes may vary

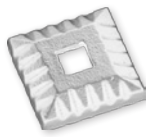
All shoes shown below are compatible with the 1/2" SQUARE balusters on these two pages



LI-ALSCR05
Screw Down
Aluminum



LI-M020
No Set Screw
Iron



LI-M022
No Set Screw
Iron



LI-ALRD201
No Set Screw
Aluminum



LI-ALSQ301
No Set Screw
Aluminum



LI-PROCOL
With Threaded Disc
Aluminum



LI-PROLVL
Alum/Iron



LI-PROKNE
Alum/Iron

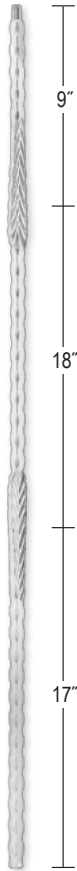


(The above three kits cannot be used with LI-40840 or LI-41144)

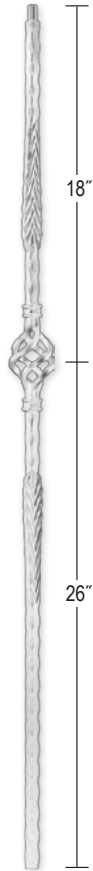
9/16" SOLID Square



LI-10044
Hammered Edge



LI-11044
Hammered Edge



LI-13044
Hammered Edge



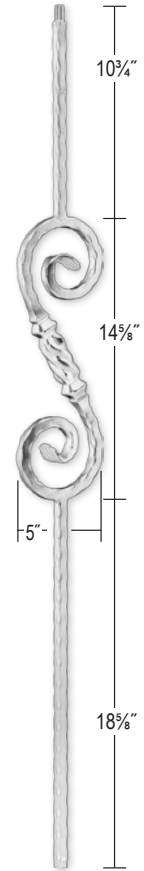
LI-9044
Hammered Edge



LI-13144
Hammered Edge



LI-13244
Hammered Edge



LI-33044
Hammered Edge

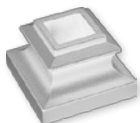
Part No.	Qty./ Box	Satin Black-SB	Matte Black-MB	Silver Vein-SV	Antique Bronze-ABZ	Oil Rubbed Copper-ORC	Oil Rubbed Bronze-ORB
LI-10044	15	11.76	11.76	Call us	Call us	13.95	14.45
LI-11044	15	12.31	12.31	Call us	Call us	14.43	15.23
LI-13044	10	19.20	19.20	Call us	Call us	Call us	Call us
LI-9044	10	10.68	10.68	10.68	10.68	12.81	13.77
LI-13144	10	21.38	21.38	Call us	Call us	22.93	24.65
LI-13244	10	24.59	24.59	Call us	Call us	27.16	29.20
LI-33044	12	25.69	25.69	Call us	Call us	27.82	30.28
LI-H03	15	2.02	2.02	2.02	2.02	2.27	2.27
LI-H04	15	2.02	2.02	2.02	2.02	2.27	2.27
LI-H05P	15	2.02	2.02	2.02	2.02	2.27	2.27
LI-ALH05P	15	2.14	2.14	2.14	2.14	2.49	2.49

• Stock part numbers are shaded —NOTE: Finishes may vary

(858) 614-1800



Shoes shown below are compatible with the 9/16" SQUARE balusters on these two pages.



LI-H03
No Set Screw
Iron



LI-H04
Screw Down
Iron

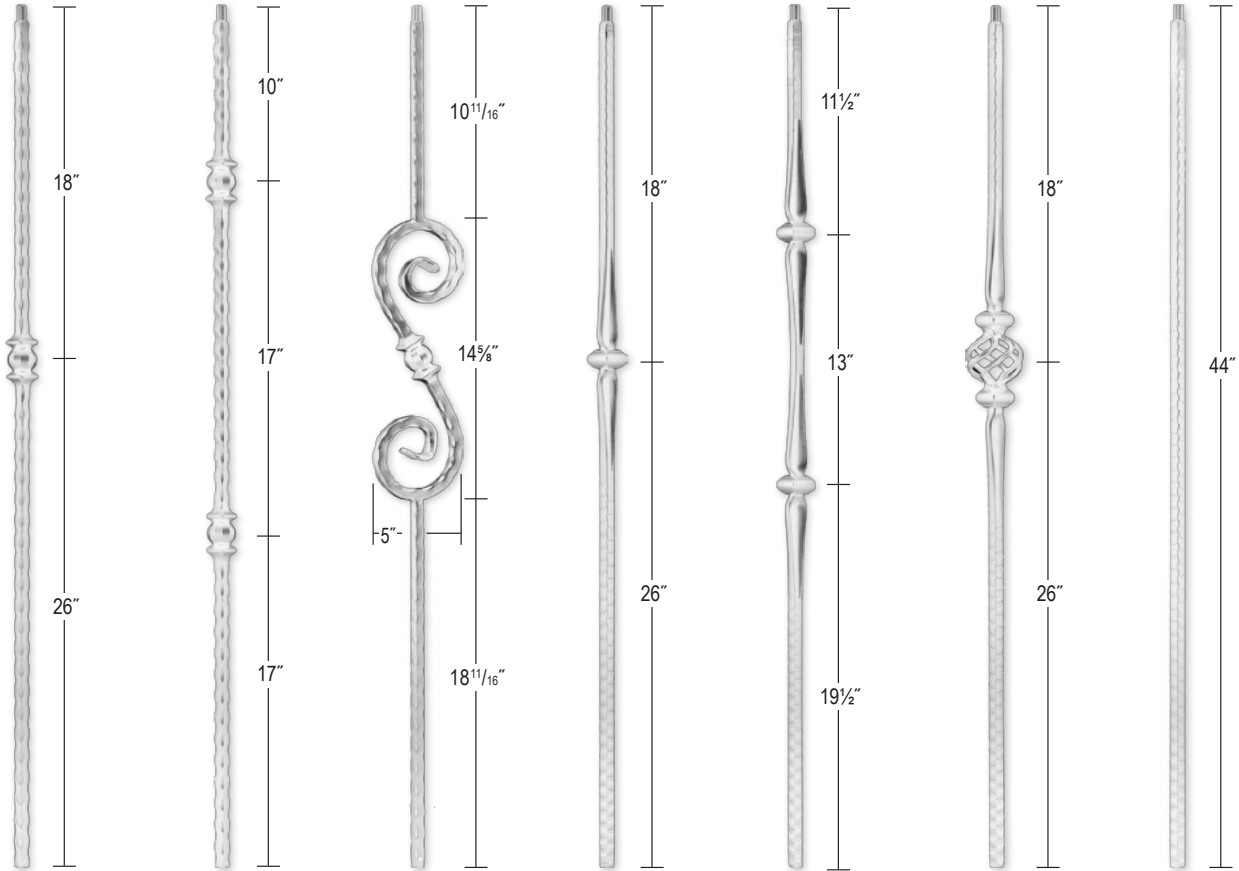


LI-H05P
With Set Screw
Iron



LI-ALH05P
With Set Screw
Aluminum

9/16" SOLID Square



LI-30544 Hammered Edge **LI-30844** Hammered Edge **LI-31044** Hammered Edge **LI-14044** Hammered Face **LI-15044** Hammered Face **LI-16044** Hammered Face **LI-14344** Hammered Face

Part No.	Qty./Box	Satin Black-SB	Matte Black-MB	Silver Vein-SV	Antique Bronze-ABZ	Oil Rubbed Copper-ORC	Oil Rubbed Bronze-ORB
LI-30544	10	14.15	14.15	14.15	14.15	17.71	18.91
LI-30844	10	17.24	17.24	17.24	17.24	22.50	24.50
LI-31044	12	22.76	22.76	22.76	22.76	24.94	27.19
LI-14044	10	11.65	11.65	11.65	11.65	14.55	16.75
LI-15044	10	13.27	13.27	13.27	13.27	17.75	19.25
LI-16044	10	16.55	16.55	16.55	16.55	21.25	23.25
LI-14344	10	9.39	9.39	9.39	9.39	10.75	12.50
LI-H06	15	1.66	1.66	1.66	1.66	1.89	1.89
LI-ALH06	15	2.14	2.14	2.14	2.14	2.49	2.49
LI-ALRD201	15	2.27	2.27	2.27	2.27	2.49	2.49
LI-ALSQ301	15	2.27	2.27	2.27	2.27	2.49	2.49

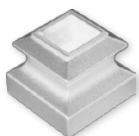
• Stock part numbers are shaded —NOTE: Finishes may vary

(858) 614-1800

Shoes shown below are compatible with the 9/16" SQUARE balusters on these two pages.
LI-ALRD201 & **LI-ALSQ301** have a plastic insert and are compatible with 1/2" & 9/16" Square iron balusters.



LI-H06
With Set Screw
Iron



LI-ALH06
With Set Screw
Aluminum



LI-ALRD201
No Set Screw
Aluminum



LI-ALSQ301
No Set Screw
Aluminum

IronPro™

Iron Baluster Fasteners

Part No.	Qty./Box	Satin Black-SB	Matte Black-MB	Silver Vein-SV	Antique Bronze-ABZ	Oil Rubbed Copper-ORC	Oil Rubbed Bronze-ORB
LI-PROCOL	15	2.49	2.49	2.49	2.49	2.74	2.74
LI-PROLVL	12	6.98	N/A	N/A	N/A	N/A	N/A
LI-PROKNE	12	8.09	N/A	N/A	N/A	N/A	N/A
LI-PROPLT1	200	1.26	1.18	1.18	1.18	1.41	1.41
LI-PROPLT2	200	1.46	N/A	N/A	N/A	N/A	N/A

IronPro™ Features:

Full Flexibility

- > Adjusts to up to 45° angle of ascent
- > Open Tread and Kneewall Stairways

Unsurpassed Durability

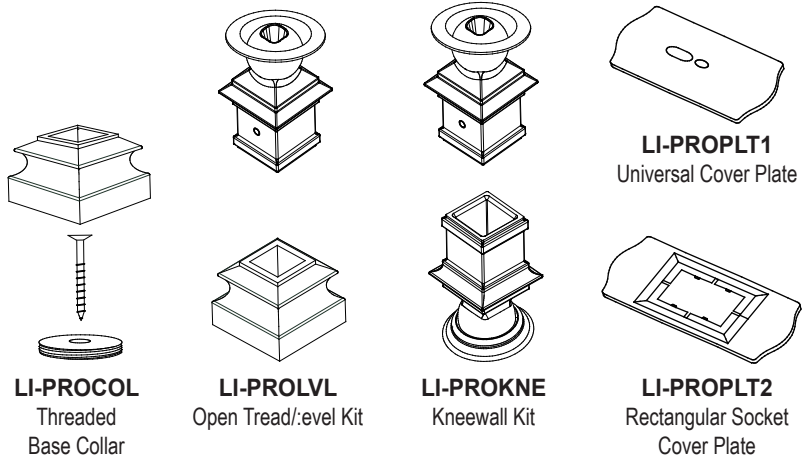
- > Balusters are screwed into place

Simple Installation

- > No holes to drill for most applications
- > All cuts are concealed at each joint

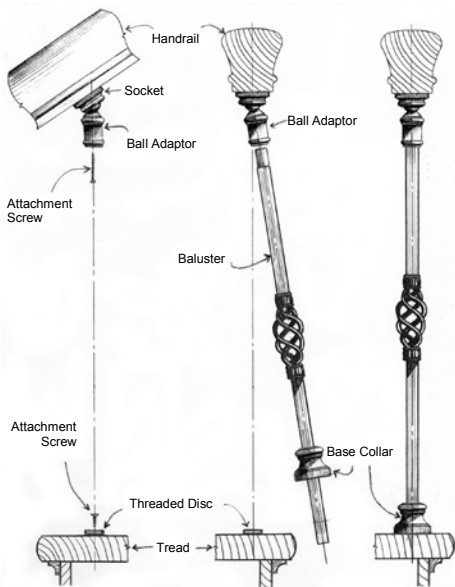
Elegant Look

- > Unique and sophisticated attachment hardware



IronPro is a revolutionary new way to install 1/2" iron balusters. Because of its easy installation, IronPro is great for new construction and even better for remodel jobs, especially when replacing wood balusters with iron balusters and leaving the newels and handrail in place. Each kit comes with the necessary hardware to install one iron baluster.

Open Tread Installation

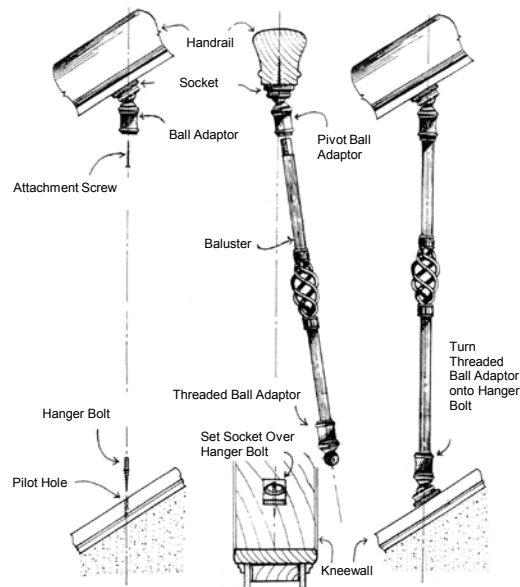


Step 1
Attach ball adaptor and socket to handrail and threaded disc to tread.

Step 2
Pivot the ball adaptor to the side and insert baluster pin top. Slide base collar onto the baluster.

Step 3
Align baluster and collar over threaded disc. Turn baluster and base collar to attach collar to disc.

Kneewall Installation



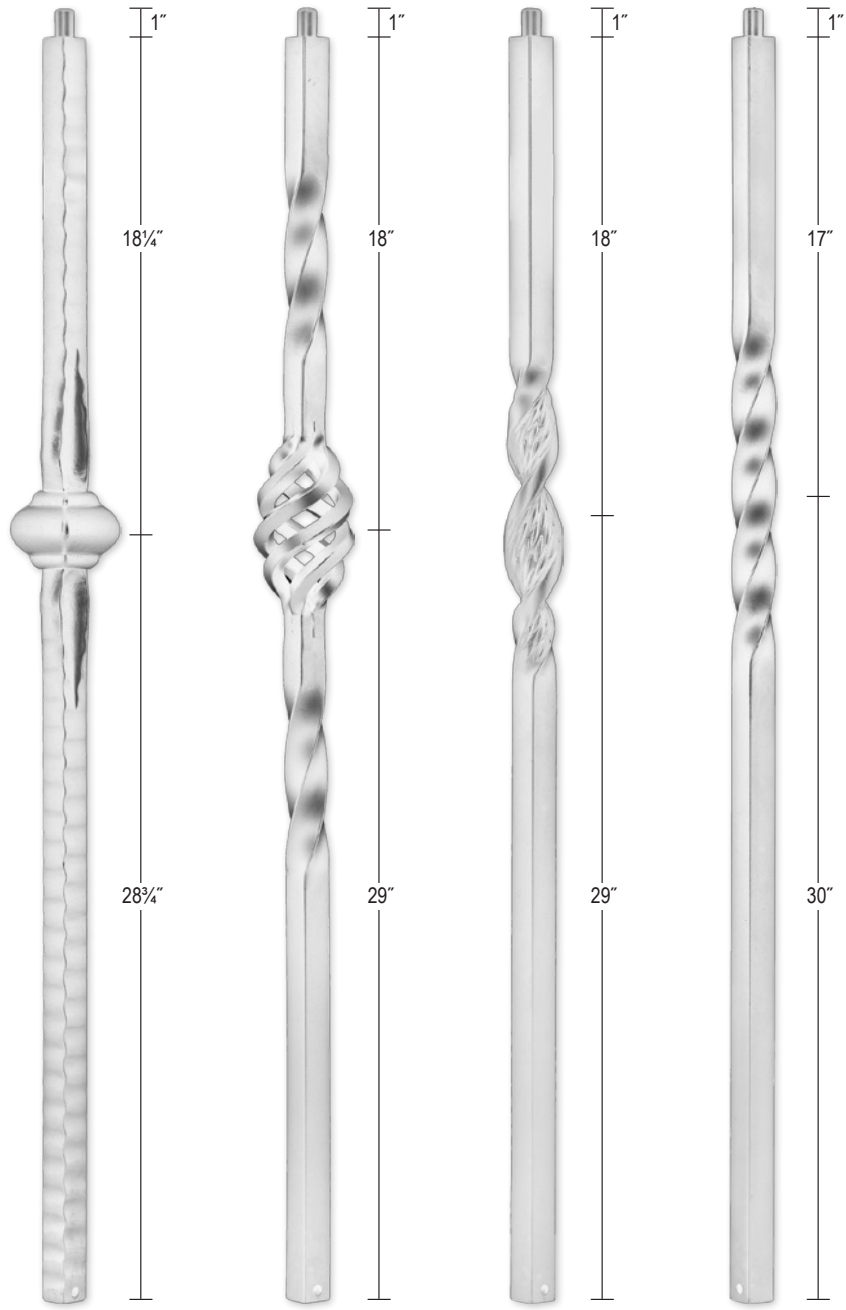
Step 1
Attach ball adaptor and socket to handrail and hanger bolt to kneewall.

Step 2
Pivot the ball adaptor to the side and insert baluster pin top. Slide threaded ball adaptor onto the baluster.

Step 3
Align baluster and threaded ball adaptor over hanger bolt. Turn threaded ball adaptor onto hanger bolt.

Square 1-3/16" SOLID Newels

Iron Newels



LI-NWL14048

LI-NWLBASK48

LI-NWLRIB48

LI-NWLTW48



(858) 614-1800



LI-NWLFSH
Newel Collar and
Mounting Kit

Part No.	Qty./ Box	Satin Black-SB	Matte Black-MB	Silver Vein-SV	Antique Bronze-ABZ	Oil Rubbed Copper-ORC	Oil Rubbed Bronze-ORB
LI-NWL14048	1	88.94	88.94	88.94	88.94	92.50	92.50
LI-NWLBASK48	1	58.73	58.73	58.73	58.73	60.16	60.16
LI-NWLRIB48	1	61.58	61.58	61.58	61.58	64.07	64.07
LI-NWLTW48	1	51.35	51.35	51.35	51.35	53.49	53.49
LI-NWLFSH	4	19.50	19.50	19.50	19.50	19.50	19.50

• Stock part numbers are shaded • See back cover for finish samples—NOTE: Finishes may vary

Ornamental Iron Collection Presents Endless Possibilities. . .

Explore our complete offering of *HOLLOW & SOLID* designs in this catalog



Returns are limited to stock purchased within the last 30 calendar days. All returns of non defective goods must be in new condition and in original packaging and are subject to a 25% restocking charge.



L.J. Smith[®]
Stair Systems

LEEPER'S
STAIR PRODUCTS
a division of L.J. Smith Stair Systems

TH&H
8849 Complex Drive
San Diego, CA 92123
(858)614-1800 Fax (858)614-1811